

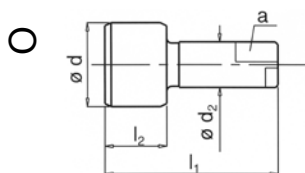
HAHNREITER

GEWINDETECHNIK

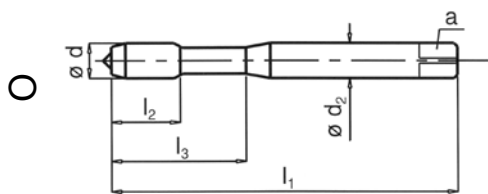
Cliente	Telefono	Data
Nome	e-mail	

Informazioni tecniche necessarie

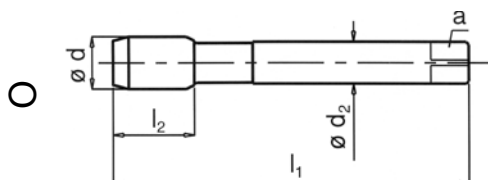
Normative	Imbocco	Elica	Rivestimento
<input type="radio"/> DIN 371 <input type="radio"/> DIN 376 <input type="radio"/> DIN 374 <input type="radio"/> DIN 5156 <input type="radio"/> DIN 13 Automat	<input type="radio"/> Imb C <input type="radio"/> Imb B <input type="radio"/> Imb E	<input type="radio"/> diritto C <input type="radio"/> diritto B <input type="radio"/> Elica 15 <input type="radio"/> Elica 20 <input type="radio"/> Elica 35	<input type="radio"/> Lucido <input type="radio"/> VAP <input type="radio"/> TIN <input type="radio"/> TICN <input type="radio"/> STY/WC



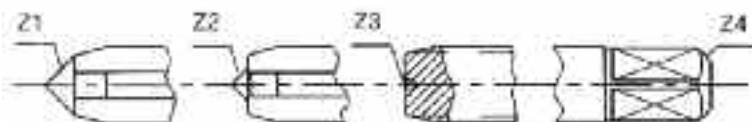
DIN 13 Automat



DIN 371



DIN 376
DIN 5156
DIN 374



	Tipo Imbocco	Spire di imbocco
	A 5°	6 - 8
	B 8°	3,5 - 5,5
	C 15°	2 - 3
	D 8°	3,5 - 5,5
	E 23°	1,5 - 2
	F 35°	1

Informazioni sulla macchina

Macchina	
Tipo	
Anno di costruzione	
Note	